



Wrist level, fingers curved

1. Write in the beats before playing.
2. Play hands separately, count aloud.
3. Play hands together, count aloud.

School Bus Blues

Leslie M. Young

What is the key signature?

1 2 3 4 1 4 2 4

count aloud → 1 1+ 2 2+ 1+ 2+ bed at six o' - clock; Run a-round my

1 3 1 2 3 4 3 2

5 4 1 2 3 4

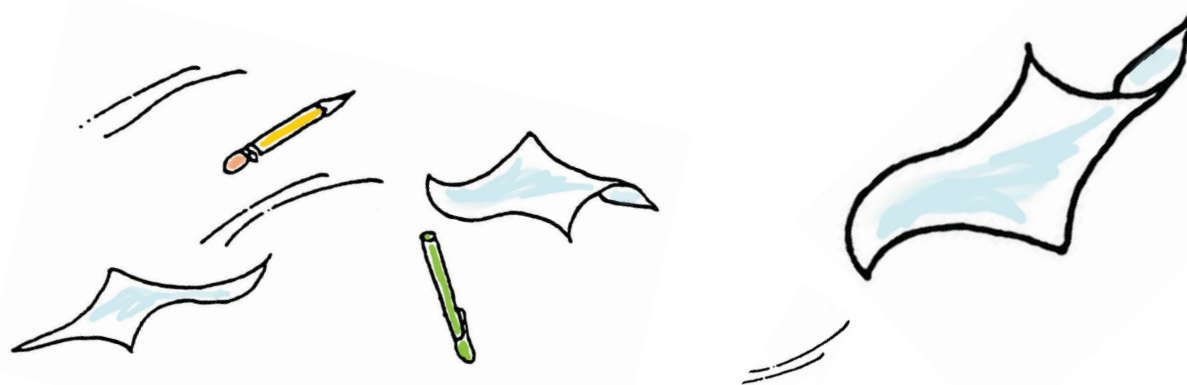
house 'till I think I'll drop; Put my clothes on, eat my mush,

1 2 1 2 2 4 1 3

4 1 3 5 2

brush and off I go! Got to catch that school bus, rain or

1 2 3 4



3 5 4 1 3 2 5 4

snow! I got the school bus___ blues! Run, don't trip or drop the books! The

3 1 1 1 3

Musical notation for the first system, including treble and bass staves with lyrics and fingerings.

1 3 1 3

1 + 2 + school bus___ blues! It won't wait, don't hes - i - tate! The school bus___ got to make it, can't be late!

1 3 1 2

Musical notation for the second system, including treble and bass staves with lyrics and fingerings.

1 2 3 1 2

blues! I've So why'd they paint it o - range? rit.

1 1 2 1 5

Musical notation for the third system, including treble and bass staves with lyrics and fingerings.